

## Energy Recovery Ventilator (ERV)

**6" Duct (Standard):**  
30 to 120 CFM



### Description

Substantial airflow in a mini Energy Recovery Ventilator with multi-speed control allows you to select the required airflow [30-120 CFM].

### DC Motor/Blower

- Power rating of 120 volts/60Hz
- Manually boosted with running time
- Constant airflow blower designed to maintain the selected airflow in standard installations
- ECM motor engineered to run continuously
- Motor equipped with thermal cutoff fuse
- Removable permanently lubricated plug-in motors
- Built-in soft start function to increase bearings' life
- Automatically powers OFF when impeller is locked abnormally

### Housing

- Galvanized steel body
- Detachable 6" diameter plastic duct adapter
- Light weight with easy installation brackets
- Insulated housing prevents condensation and noise

### Features

- Intuitive digital controller included
- MERV 13 filter included
- Twin motorized dampers for air tightness
- Four installation methods: wall mount, truss mount, chain mount, under ceiling mount
- HVAC interlock with removable wiring block
- ASHRAE 62 Run time function

### Controls

- Fault indicator display (FID) for CA title 24
- Multi-speeds offer continuous ventilation

### Defrost

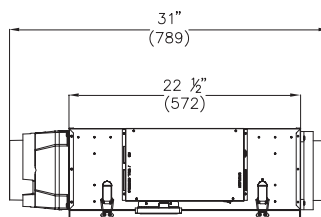
Auto defrost mode will start when the outdoor air temperature drops below 14°F (-10°C) to prevent the energy recovery core from clogging. After defrosting, the ERV will resume delivery of fresh air into house.

### Typical Specification

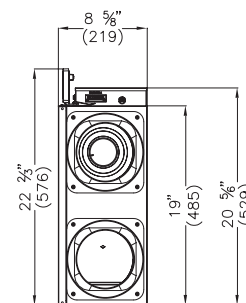
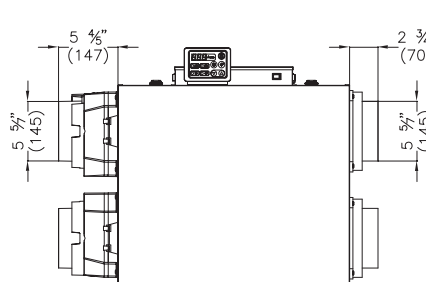
Delta Breez ERV model VEB120S has ECM motor engineered to run continuously for a minimum 60,000 hours with airflow rating from 30 to 120 CFM. Housing is insulated to reduce condensation and noise. MERV 13 filter is a superior filter and required in many cases by code or IAQ program recommendations. Interlocked control can be hardwired to the HVAC system.

### Energy Recovery Core

- Crossflow core of moisture permeable membrane
- Dimensions: 10¼ x 10¼ x 7 inch (260 × 260 × 180 mm)



BreezFresh ERV	Model No. VEB120S
Length	22½" (572 mm)
Width	19" (485 mm)
Height	8⅝" (219 mm)
Weight	36 lbs (16.3 kg)
Operating temperature	-22°F to 104°F (-30°C to 40°C)



## Energy Recovery Ventilator (ERV)

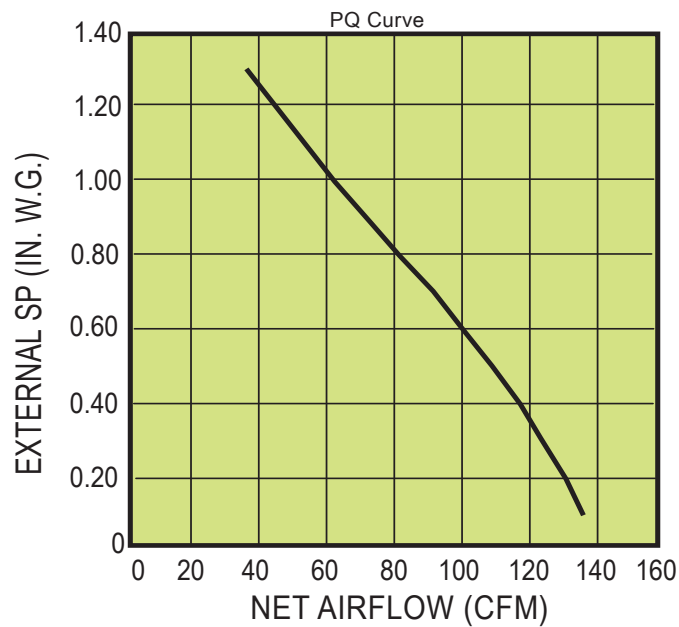
**6" Duct (Standard):**  
30 to 120 CFM



## Airflow Performance

Inch A.q. (Pa)	0.2 (50)	0.4 (100)	0.6 (150)	0.8 (200)	1.0 (250)
Net supply airflow CFM (L/s)	131 (62)	119 (56)	102 (48)	83 (39)	64 (30)

Engineering design and specifications to change without notice.



## Thermal Performance

Heating mode	Sensible Recovery Efficiency (SRE)	32°F (0°C)	36 CFM (17 L/s)	77%
Heating mode	Sensible Recovery Efficiency (SRE)	32°F (0°C)	64 CFM (30 L/s)	75%
Heating mode	Sensible Recovery Efficiency (SRE)	32°F (0°C)	106 CFM (50 L/s)	70%
Heating mode	Sensible Recovery Efficiency (SRE)	-13°F (-25°C)	36 CFM (17 L/s)	57%
Cooling mode	Total Recovery Efficiency (TRE)	95°F (35°C)	36 CFM (17 L/s)	75%
Cooling mode	Total Recovery Efficiency (TRE)	95°F (35°C)	64 CFM (30 L/s)	62%

Engineering design and specifications to change without notice.

Models	Quantity	Comments	Project:
			Location:
			Architect:
			Engineer:
			Contractor:
			Submitted by:
			Date: