



ENJOY THE breez

COMFORT LIVING. ENERGY SAVING.

DELTA BREEZ CEILING FANS



Smarter. Greener. Together.

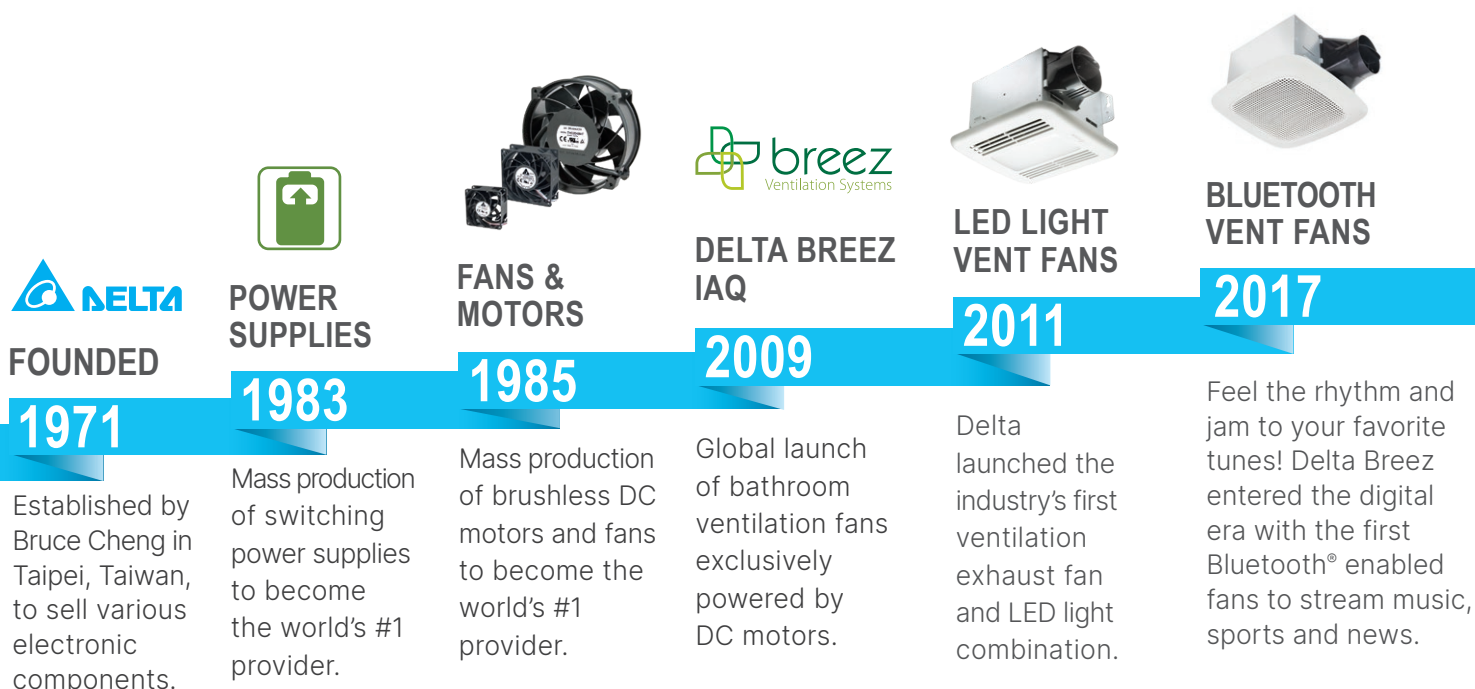
VENTILATION RE-IMAGINED

Introduction to Delta

In 2009, Delta Breez ushered in a new era for bathroom ventilation and the Indoor Air Quality (IAQ) industry by launching a line of exhaust fans powered exclusively by DC motors – which are known for their legendary reliability, silent performance and energy-efficiency. By re-inventing the ubiquitous bath fan, we've saved consumers a lot of money on their electricity bills and enabled countless families to breathe easier.

Precision engineering lives in our DNA. In 1971, the Delta Group was founded with the mission of providing "innovative, clean and energy-efficient solutions for a better tomorrow." We are the world's largest manufacturer of brushless DC fans for all applications from consumer electronics to industrial equipment. Our footprint spans the globe with more than \$12 billion in annual revenues, 48 plant sites, 72 R&D centers and 158 sales offices. Our U.S. and Americas headquarter is located in the heart of Silicon Valley in Fremont, California.

Innovation for future generations starts today. Our commitment and vision run deep – with a focus on developing the best and most energy-efficient solutions. As part of this evolution, we are proud to introduce new products, including air movers and ceiling fans for better air circulation, as well as fresh air supply fans and energy recovery ventilators for comprehensive whole-house ventilation. Offering consumers new choices is important for us, and Delta will only continue to push the envelope.





DC MOTORS EXPLAINED

Reliable. Silent. Efficient. Innovative.

Legendary reliability and performance.

Each DC motor Delta Breez fan is tested to run continuously for 70,000 hours, which is the equivalent of 8 years.

So quiet, you forget it's on.

Brushless technology and precision engineering mean near silent performance, as low as <0.3 sones – the lowest sound rating in the industry.

An energy efficiency workhorse.

Our fans use up to 74% less power than typical AC motor fans, and we exceed ENERGY STAR® requirements for efficiency by as much as 339%

Smart fan technology protects your family.

Our proprietary lock protection system stops the fan from overheating.



AIR MOVER
2022

Delta introduces the first DC motor centrifugal air mover that is more energy-efficient, quieter, and lighter than ever before.



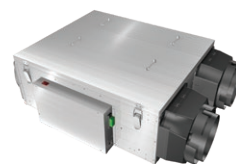
CEILING FANS
2022

New ceiling fans meet the highest efficiency standards, recognized as ENERGY STAR® Most Efficient, with smooth start-up, quiet operation, low vibration and uniform multi speed airflow for a great user experience.



SUPPLY FAN
2023

Delta BreezFresh FRS200 is a DC fresh air supply fan. High air flow and low noise fresh air supply fan with temperature and humidity sensor allows you to select your required airflow [30-200 CFM].



ENERGY RECOVERY VENTILATOR ERV
2024

Breathe easy with Delta BreezFresh ERVs' lightweight design, the revolutionary energy recovery systems that deliver the freshest, cleanest air to your home.



ENERGY STAR®
PARTNER - 7TH
SUSTAINED
EXCELLENCE

2024

Delta has won Partner of the Year for nine consecutive years and was also honored with the "Sustained Excellence" designation since 2018.



ENJOY THE breez

COMFORT LIVING. ENERGY SAVING.



Delta Breez Air Quality Solutions:

Year-round comfort and energy savings

Six-speed adjustable modes with forward and reverse functions, enhancing indoor airflow in various temperature conditions.



In Summer, the fans should be set to blow downward

- If using air conditioning to cool the home, a ceiling fan will allow a higher thermostat setting of about 4°F with no reduction in comfort. (air conditioner savings 4~8%)
- During hot weather, ceiling fans may allow you to avoid using your air conditioner altogether

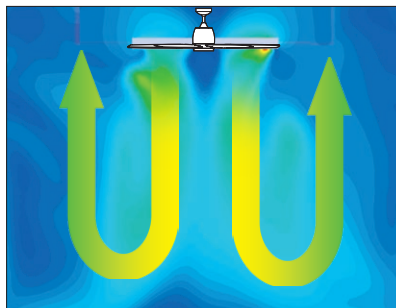
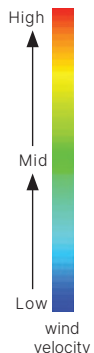


In Winter, the fans should be set to blow upward

- Using a ceiling fan in winter saves energy by allowing a lower thermostat setting, with no reduction in comfort
- Forward or reverse rotation can be selected according to the season

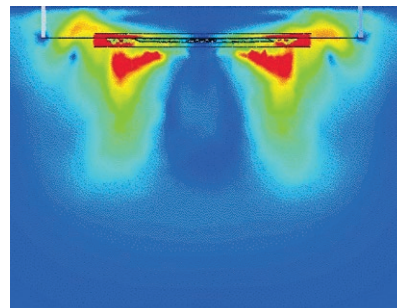
Improving Indoor Air Circulation

Delta DC ceiling fans effectively boost indoor air circulation when used in conjunction with air conditioning and heating systems. This helps achieve optimal indoor comfort quickly and reduces the frequency of the air conditioner's compressor cycling, resulting in energy savings.



Delta Ceiling Fan
Quickly and evenly facilitate air circulation to every corner of the room

*Simulation space: 4.5 × 4.5 × 3.5 m



Some Ceiling Fans
Only causing localized airflow within the indoor space, unable to uniformly circulate indoor air

52" Ceiling Fans



52" Benicia Ceiling Fans
VCA523LED-30-WH. Matte white.



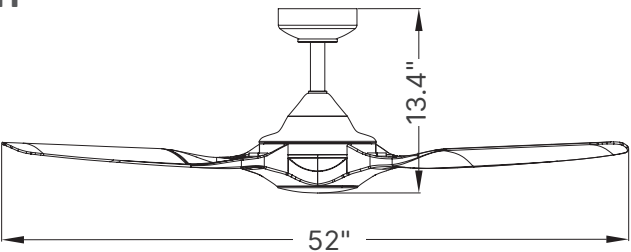
52" Benicia Ceiling Fans
VCA523LED-30-BK. Matte black.

Decorative light kit cover
(matte white & matte black)
available upon request.

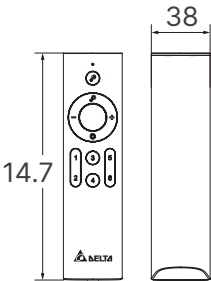


Dimension:
52 inch

unit: inch
6-inch down rod included



Remote control
(battery included)



Product Specifications:

Ceiling Fans	52 inches 3-blade with 3000K LED light	
Model Name	VCA523LED-HEWH	VCA523LED-HEBK
Finish	Matte White	Matte Black
Color Temp (K)	3,000K	
Raw Lumens	1,400	
Lumens Output	1,000	
CRI	> 90	
LED Light (Watts)	13	
Lumens per watt	76.9	
Weighted-average Air Flow (CFM)	3,271	
Weighted-average Energy Use (W)	10	
High Air Flow (CFM)	4,800	
Power Consumption (W)	13	
Energy Efficiency (CFM/Watt)	312	
Current (Amps)	0.25 Max	
Power Rating (V/Hz)	120/60	
Dimmable	Yes	
Indoor/Outdoor Usage	Indoor / Outdoor	
Fan body materials	Metal	
Blade materials	Plastic (ABS)	
Lamshade covers material	Plastic (PC)	



remote control
included



60" Ceiling Fans



60" Pleasanton Ceiling Fans
VCA605LED-HEWH or VCA605LED-HEBK

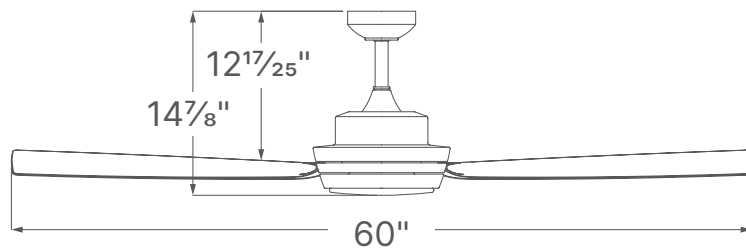


60" RioVista Ceiling Fans
VCA608LED-HEWH or VCA608LED-HEBK

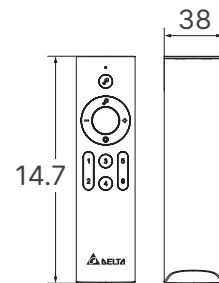
Dimension:

unit: inch

60 inch



Remote control
(battery included)



Product Specifications:

Ceiling Fans	60 inches 5-blade with LED light		60 inches 8-blade with LED light	
Model Name	VCA605LED-HEWH	VCA605LED-HEBK	VCA608LED-HEWH	VCA608LED-HEBK
Finish	Matte White	Matte Black	Matte White	Matte Black
Blade Span	60"		60"	
Number of Blade	5		8	
Airflow (CFM)	6,400		6,100	
Power Consumption (W)	20		17	
Efficiency (CFM/W)	334		383	
Control Type	Remote Control			
Fan Speed	6			
Reverse Capable	Yes			
Light Type	20W Integrated LED (1500 lm)			
Dimmable	Yes			
Indoor/Outdoor Usage	Indoor / Outdoor			
Lumen output (lm)	1,500			
Lumen per watt	75			
CRI	> 90			
CCT (K)	3,000K			
Fan body materials	Metal			
Blade materials	Plastic (ABS)			
Lamshade covers material	Glass			



remote control
included



72" Ceiling Fans



72" Pleasanton Ceiling Fans
VCA725LED-HEWH or VCA725LED-HEBK

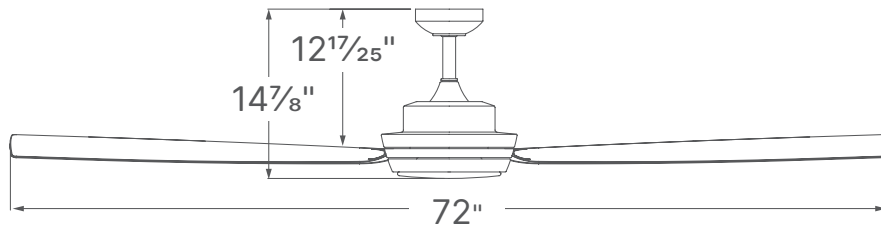


72" RioVista Ceiling Fans
VCA728LED-HEWH or VCA728LED-HEBK

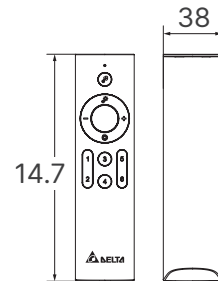
Dimension:

unit: inch

72 inch



Remote control
(battery included)



Product Specifications:

Ceiling Fans	72 inches 5-blade with LED light		72 inches 8-blade with LED light	
Model Name	VCA725LED-HEWH	VCA725LED-HEBK	VCA728LED-HEWH	VCA728LED-HEBK
Finish	Matte White	Matte Black	Matte White	Matte Black
Blade Span	72"		72"	
Number of Blade	5		8	
Airflow (CFM)	7,900		7,200	
Power Consumption (W)	22		22	
Efficiency (CFM/W)	339		409	
Control Type	Remote Control			
Fan Speed	6			
Reverse Capable	Yes			
Light Type	20W Integrated LED (1500 lm)			
Dimmable	Yes			
Indoor/Outdoor Usage	Indoor / Outdoor			
Lumen output (lm)	1,500			
Lumen per watt	75			
CRI	> 90			
CCT (K)	3,000K			
Fan body materials	Metal			
Blade materials	Plastic (ABS)			
Lamshade covers material	Glass			



remote control
included



Dealer Address:



Learn more about Delta Breez Ventilation Fans, the best indoor air quality solution for green construction.

www.deltabreez.com

Delta Electronics (Americas) Ltd.

46101 Fremont Blvd.
Fremont, CA 94538

Technical support: (888) 979-9889
BreezTechSupport@deltaww.com

Customer sales support: (877) 685-4384
BreezSalesSupport@deltaww.com

Fax: (510) 226-5098

