



ENJOY THE breez

COMFORT LIVING. ENERGY SAVING.

52" BENICIA CEILING FAN





Cozy and Inviting Light

Transform the ambiance of any room with the warm and inviting glow of its light, creating a cozy feel, to soothe you after a long day.



Aesthetic Slim Blade Design

Elevate the style of any room with its sleek blade design, providing a refreshing breeze and adding a touch of sophistication to your home décor. Blends seamlessly with any interior design.



Gracious Curve

Embrace the 120-degree rounded corner design, with smooth lines and gentle curve that exudes elegance and uniqueness, creating a sense of fluidity and harmony and transforming your space into a sanctuary of style and comfort.



Time-saving Installation

Give it a try – our ultimate installation solution without the hassle. The light weight 13.2 lb fan body and the plug-in slots for blades are designed for quick assembly. Simplified steps for your unimaginable experience.

Year-round use, healthy, comfortable, and energy-efficient

Six-speed adjustable modes with forward and reverse functions, enhancing indoor airflow in various temperature conditions.



In summer, the fan should be set to blow downward

- If using air conditioning to cool the home, a ceiling fan will allow a higher thermostat setting of about 4°F with no reduction in comfort. (air conditioner savings 4~8%)
- During hot weather, ceiling fans may allow you to avoid using your air conditioner altogether



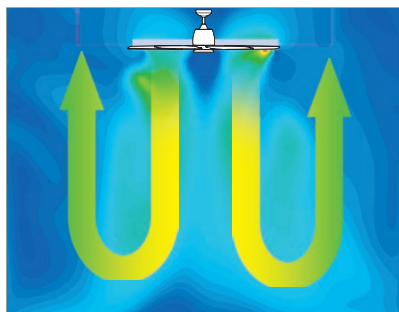
In winter, the fan should be set to blow upward

- Using a ceiling fan in winter saves energy by allowing a lower thermostat setting, with no reduction in comfort
- Forward or reverse rotation can be selected according to the season

Improving Indoor Air Circulation

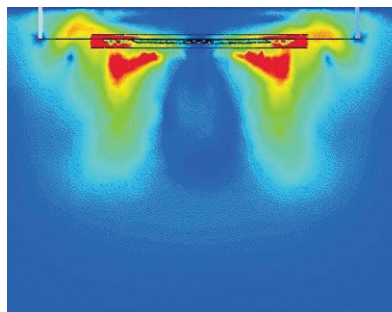
Delta DC ceiling fans effectively boost indoor air circulation when used in conjunction with air conditioning and heating systems. This helps achieve optimal indoor comfort quickly and reduces the frequency of the air conditioner's compressor cycling, resulting in energy savings.

High
Mid
Low
wind
velocity

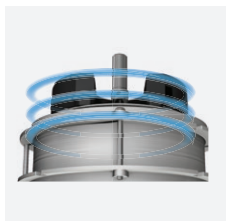


Delta Ceiling Fan
Quickly and
evenly facilitate air
circulation to every
corner of the room

*Simulation space: 4.5 × 4.5 × 3.5 m

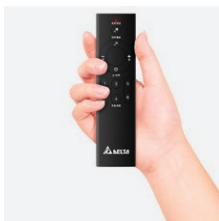


Some Ceiling Fans
Only causing
localized airflow
within the indoor
space, unable to
uniformly circulate
indoor air



Super Energy Saving

Delta DC ceiling fans target ENERGY STAR Most Efficient for more energy savings, and consumes 60% less energy compared to AC motor products.



Effortless Wireless Fan Control

Easy-to-use RF remote control handheld device: it operates in all directions, allowing you to control the ceiling fan from up to 11 yards away in open spaces, and it can simultaneously control multiple Delta Breez Ceiling Fans.



Quiet Operation

Bring a sense of calm and tranquility to your home with its whisper-quiet DC motor, a perfect balance of performance and functionality.

52" Ceiling Fans



52" Benicia Ceiling Fans
VCA523LED-30-WH. Matte white.



52" Benicia Ceiling Fans
VCA523LED-30-BK. Matte black.

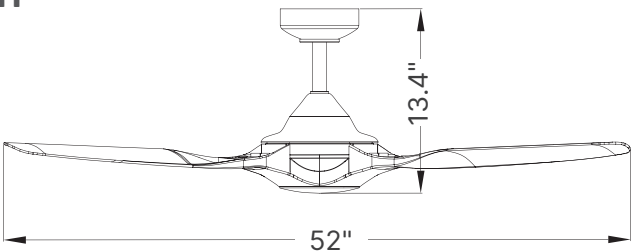
Decorative light kit cover
(matte white & matte black)
available upon request.



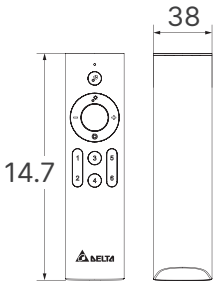
Dimension:

52 inch

unit: inch
6-inch down rod included



Remote control
(battery included)



Product Specifications:

Ceiling Fans	52 inches 3-blade with 3000K LED light	
Model Name	VCA523LED-HEWH	VCA523LED-HEBK
Finish	Matte White	Matte Black
Color Temp (K)	3,000K	
Raw Lumens	1,400	
Lumens Output	1,000	
CRI	> 90	
LED Light (Watts)	13	
Lumens per watt	76.9	
Weighted-average Air Flow (CFM)	3,271	
Weighted-average Energy Use (W)	10	
High Air Flow (CFM)	4,800	
Power Consumption (W)	13	
Energy Efficiency (CFM/Watt)	312	
Current (Amps)	0.25 Max	
Power Rating (V/Hz)	120/60	
Dimmable	Yes	
Indoor/Outdoor Usage	Indoor / Outdoor	
Fan body materials	Metal	
Blade materials	Plastic (ABS)	
Lamshade covers material	Plastic (PC)	



remote control
included

